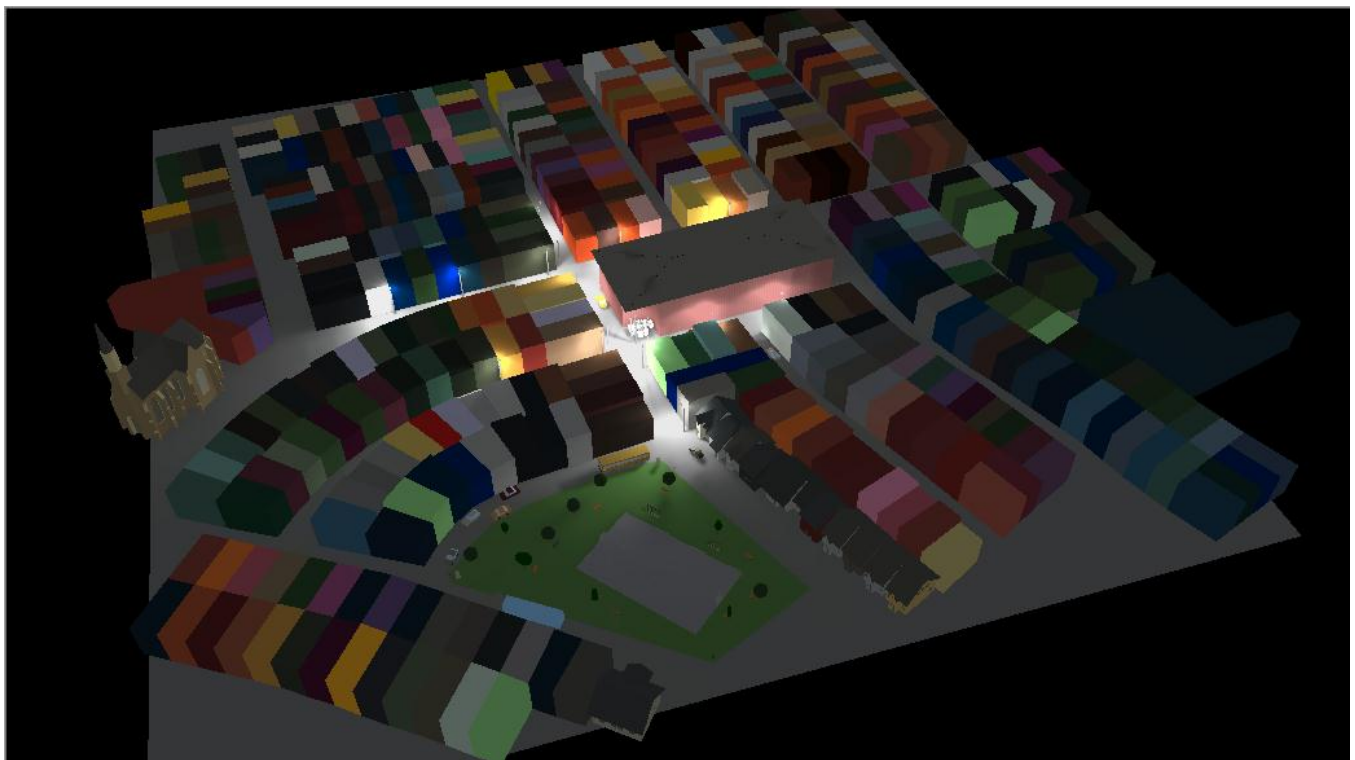
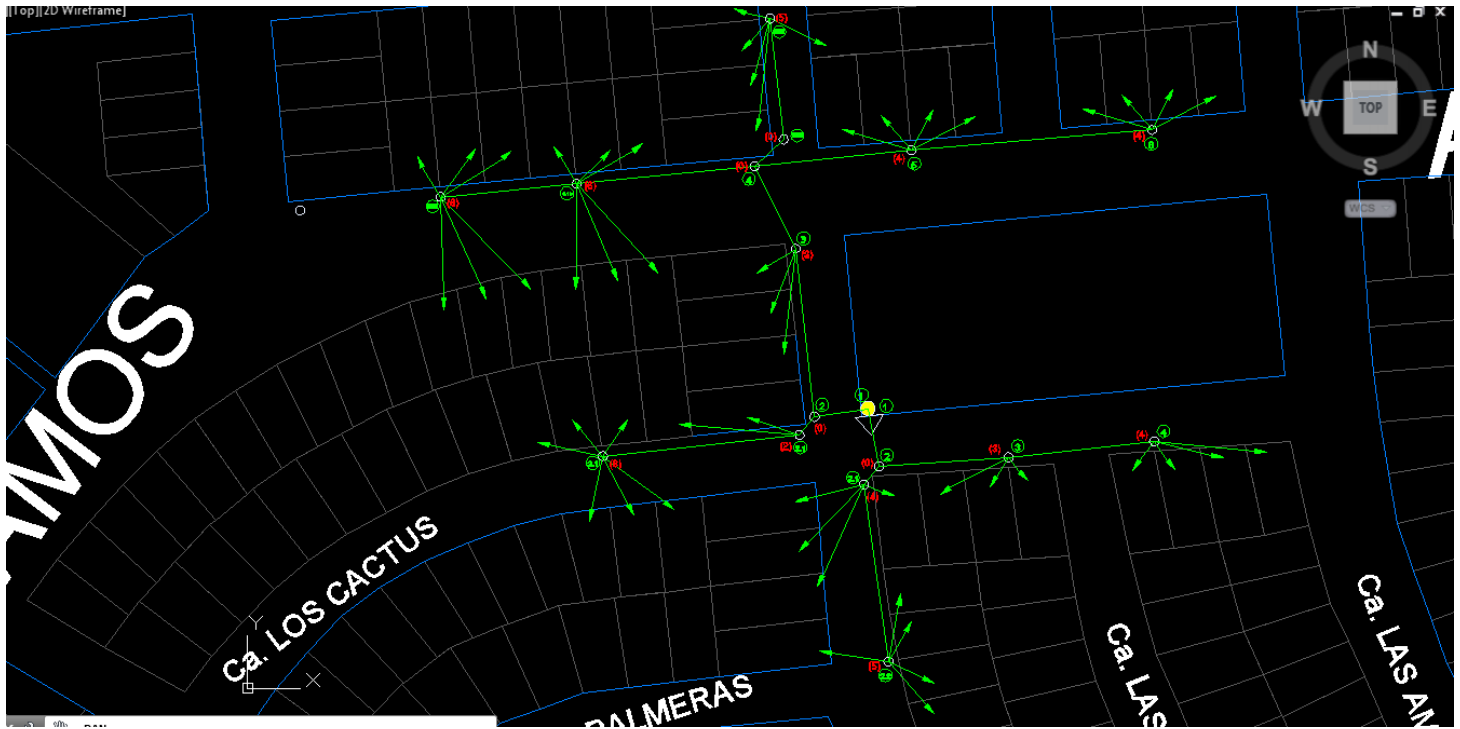
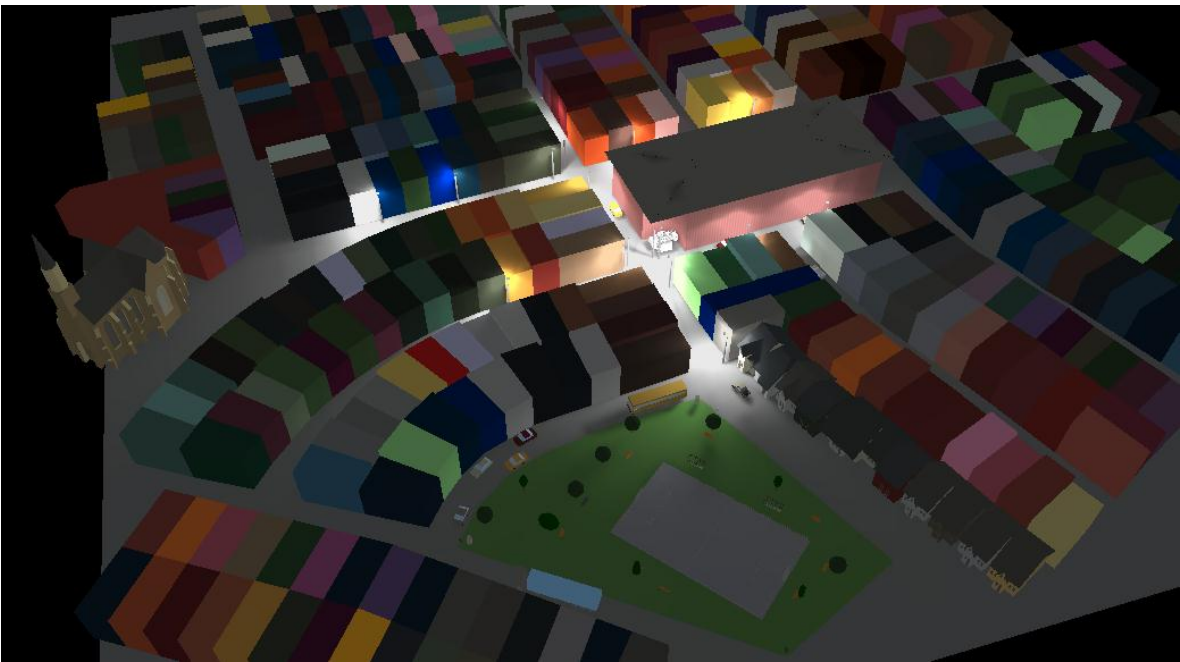
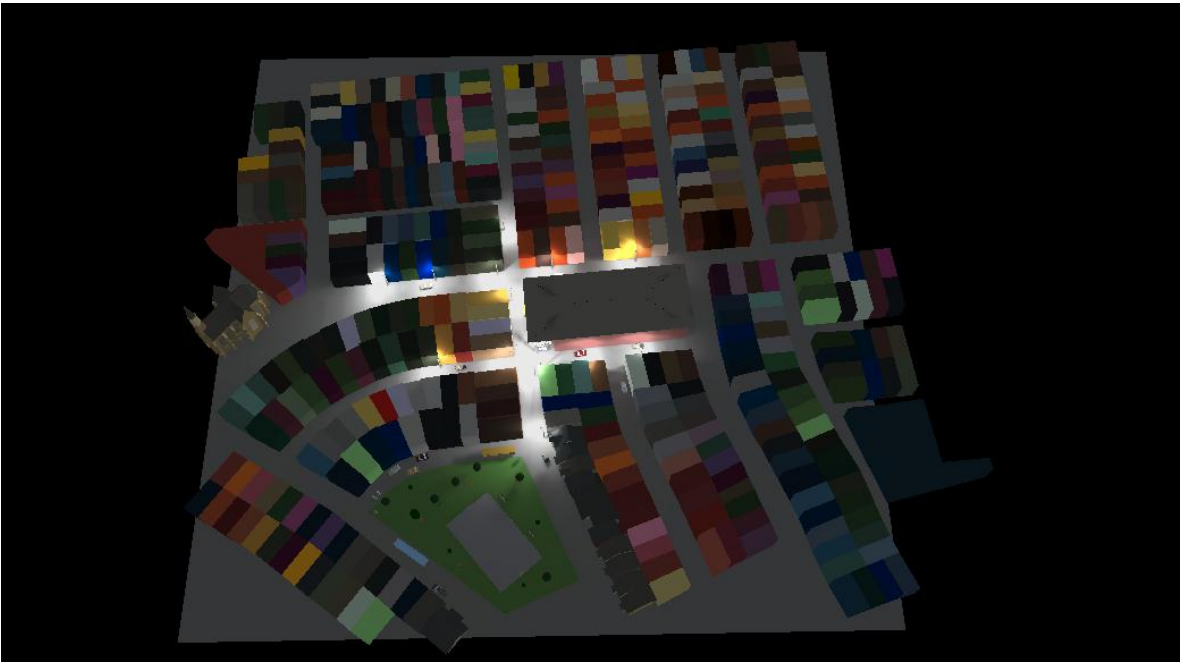
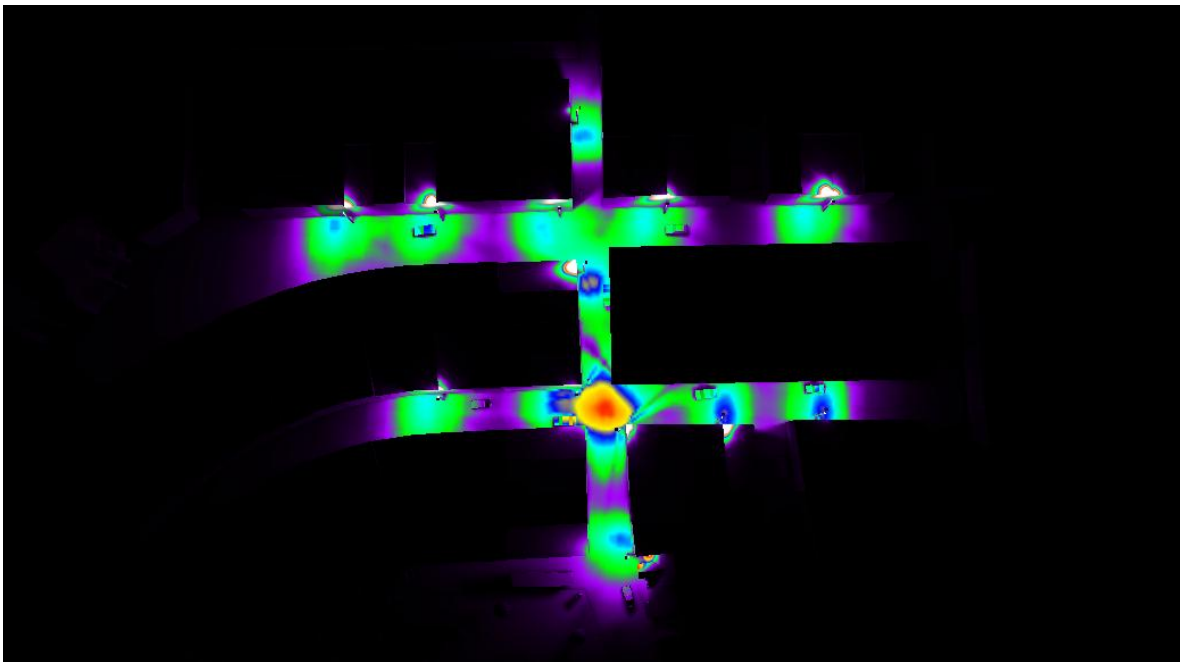
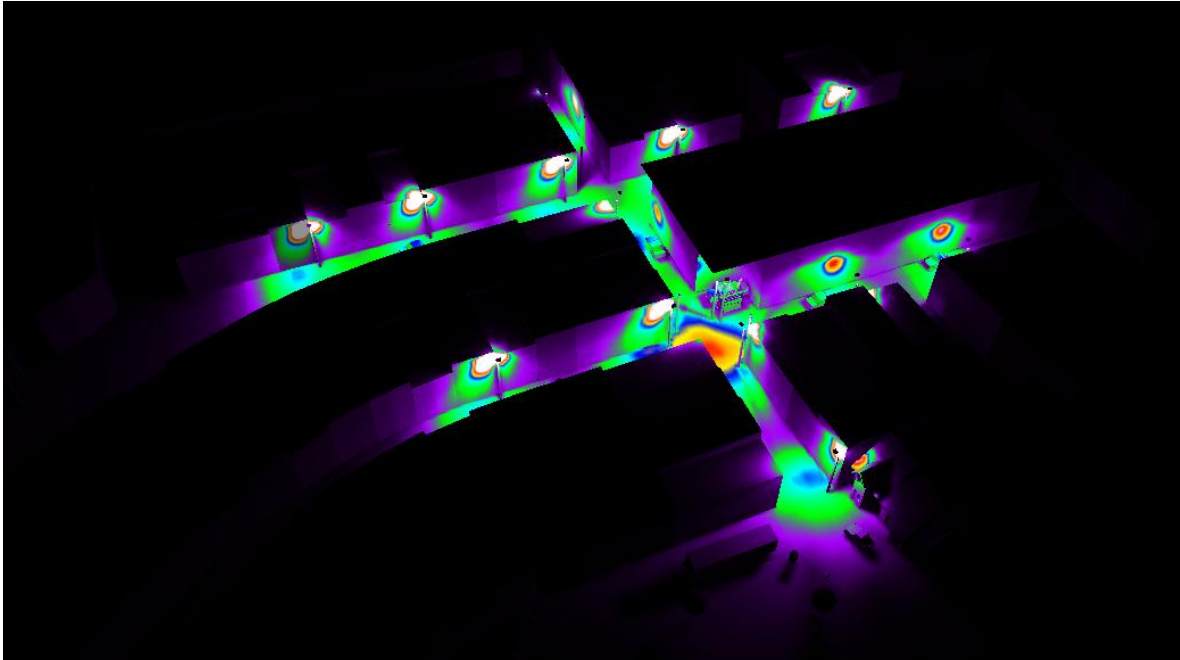


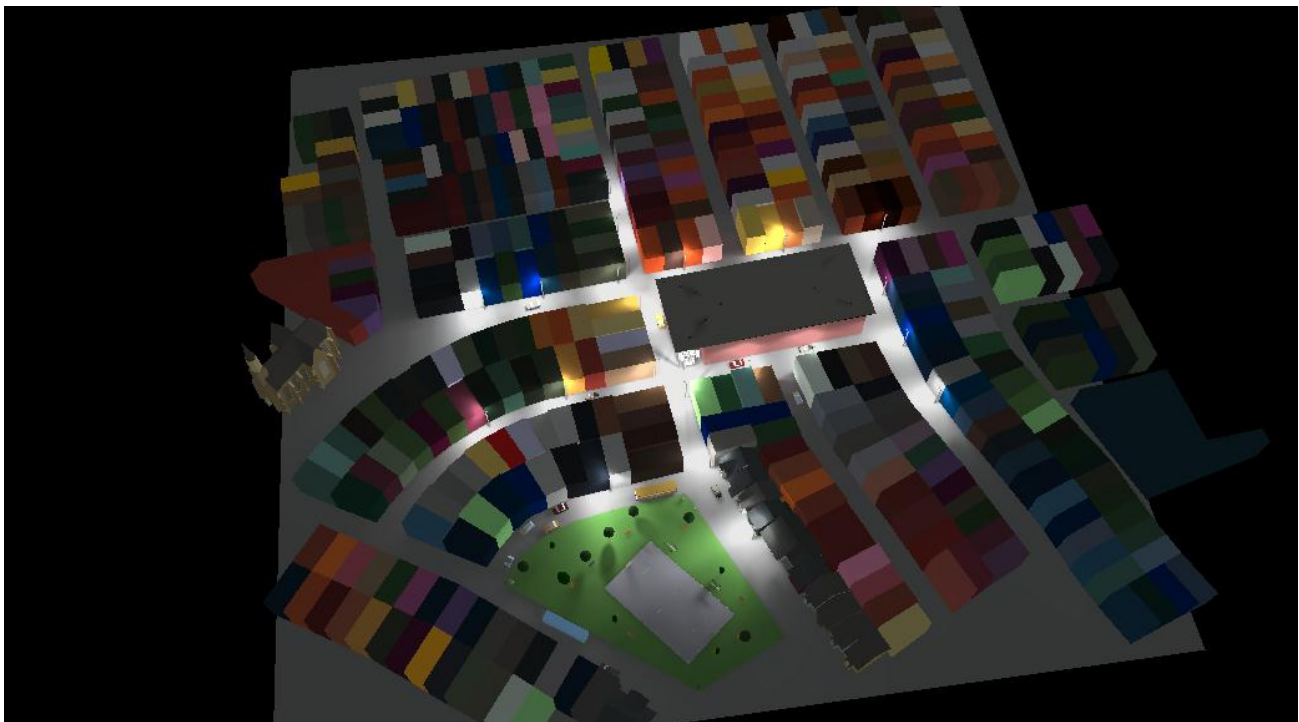
### Alumbrado con el trafo de 100KVA

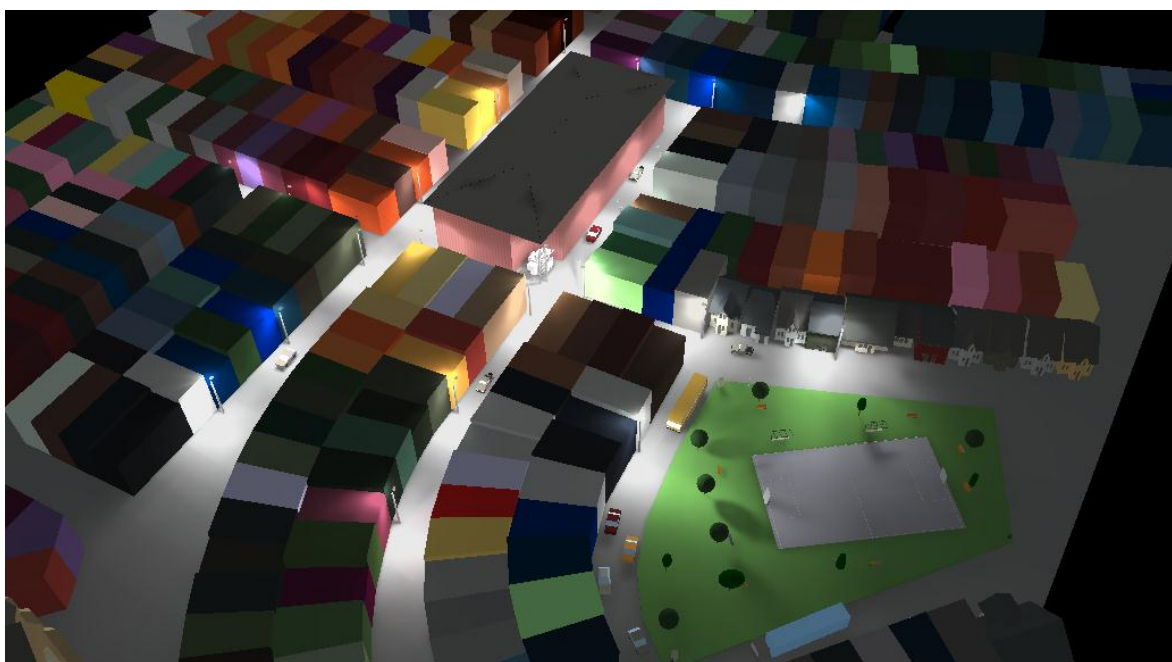


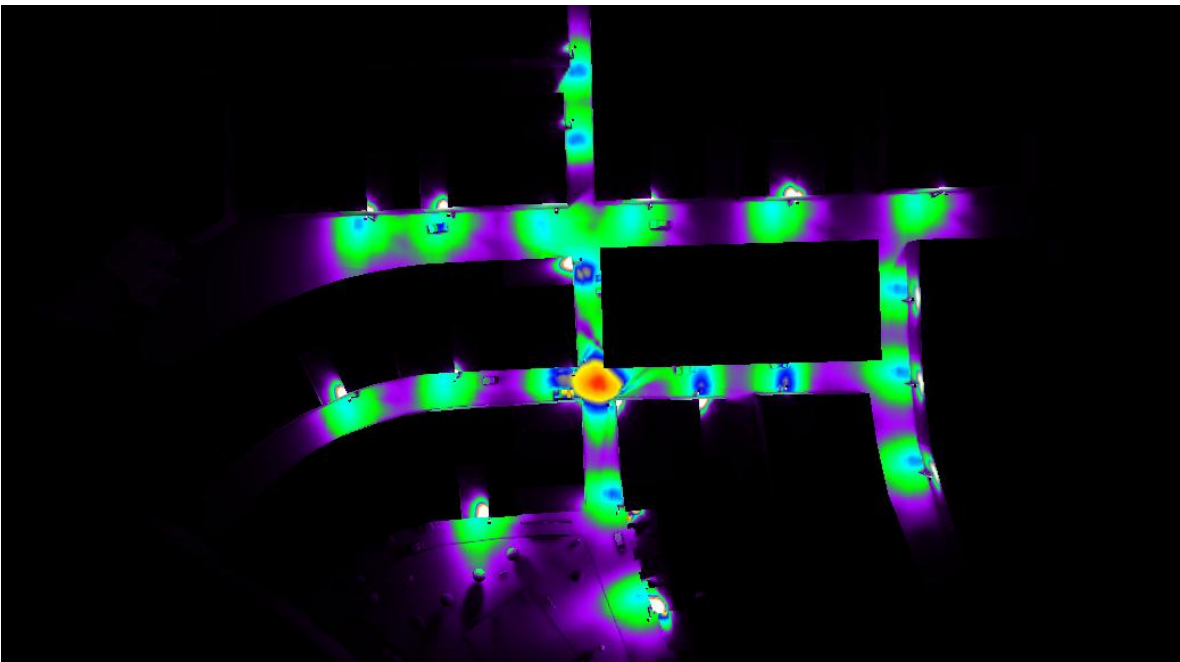
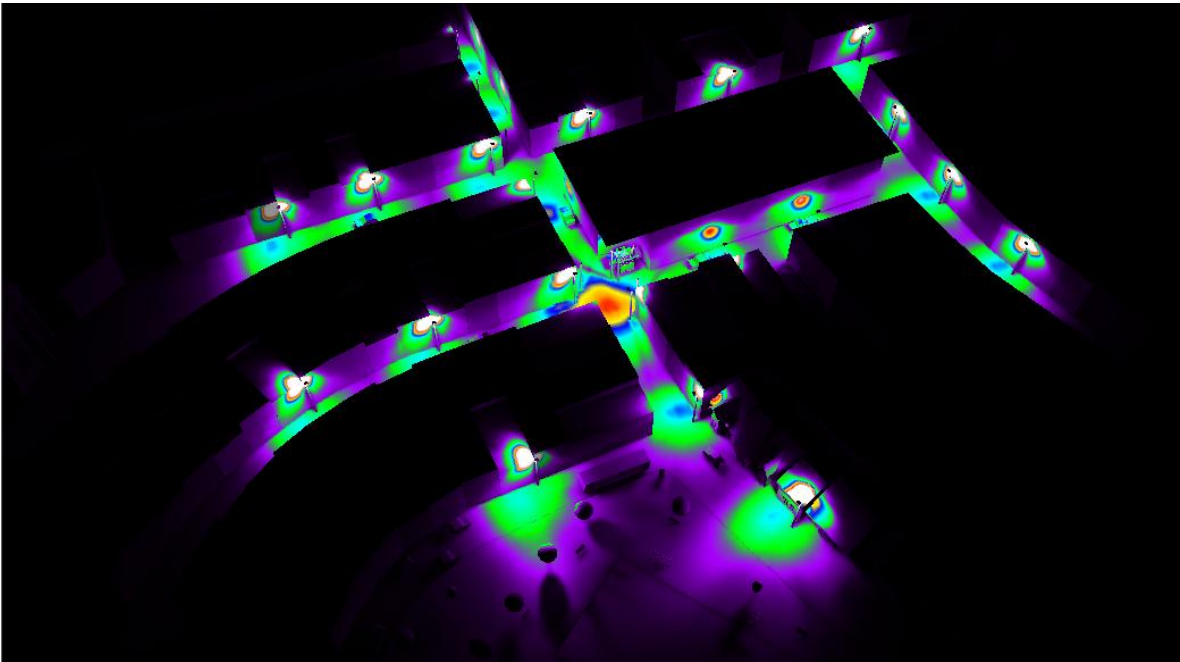




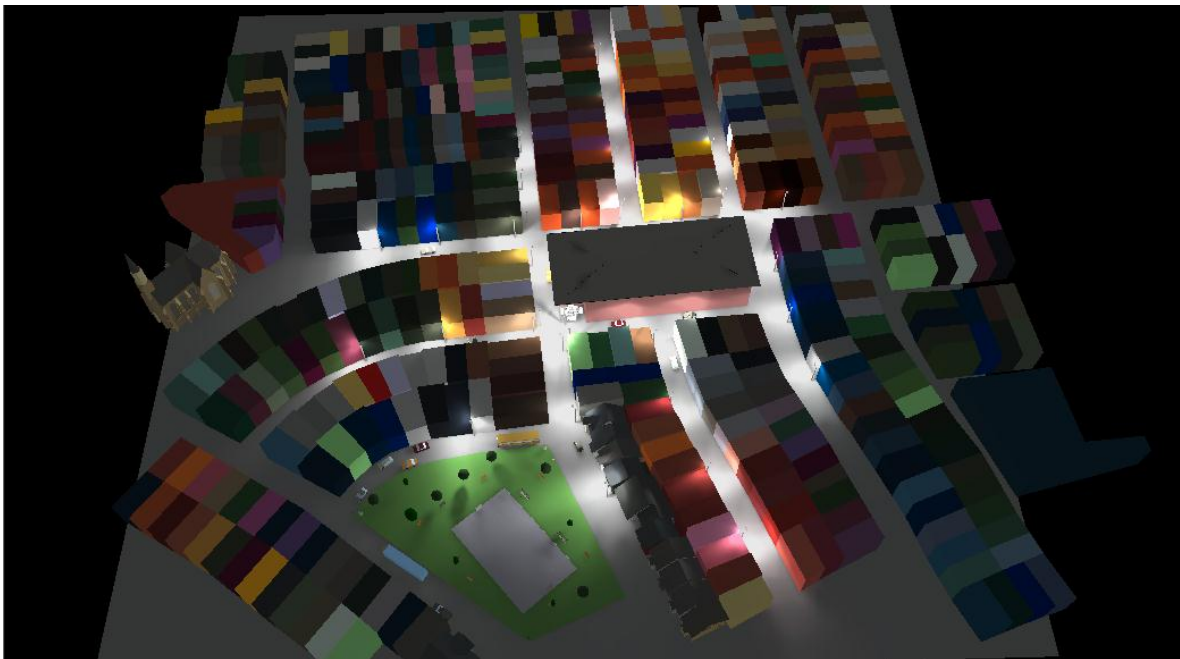
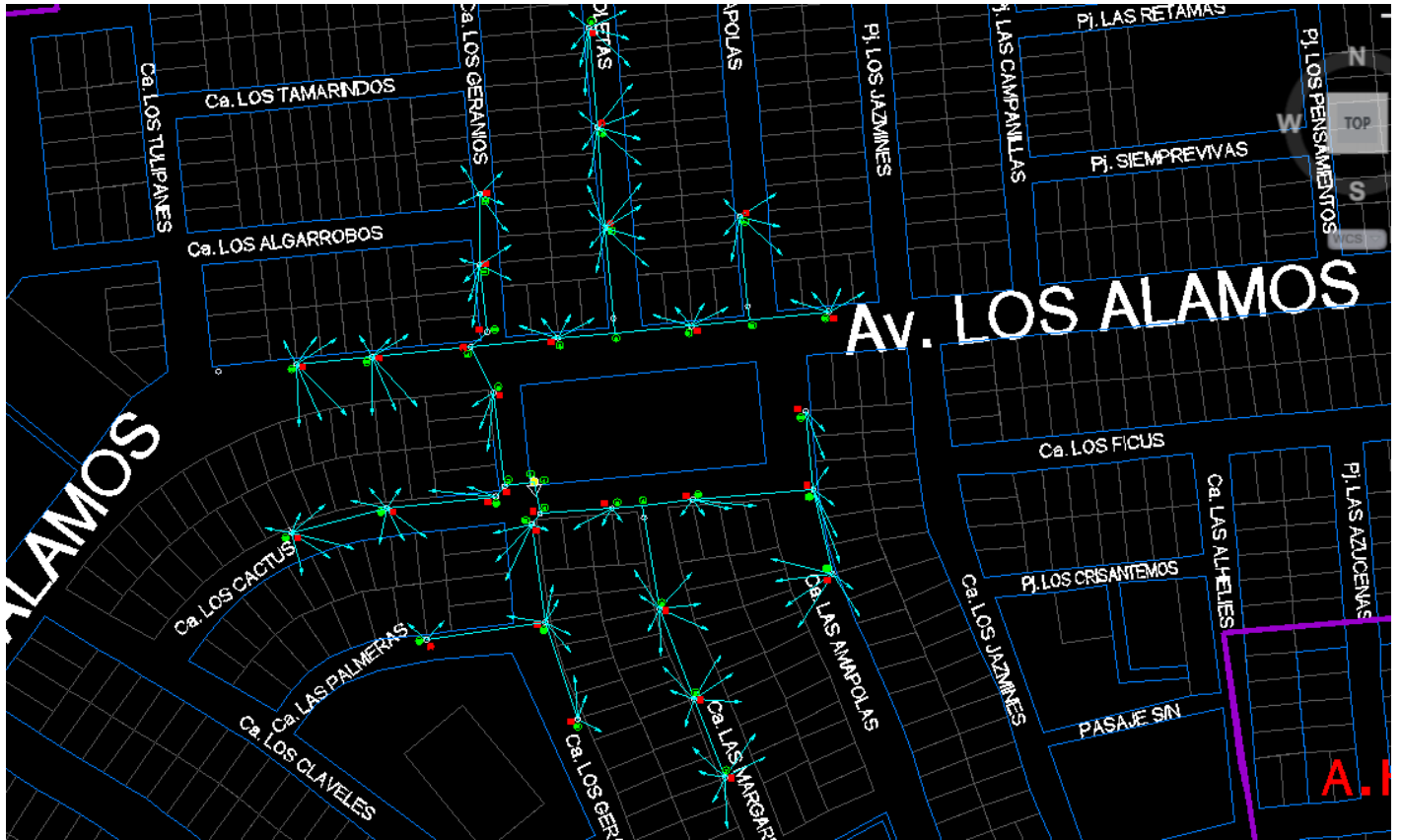
## Alumbrado con el trafo de 160KVA

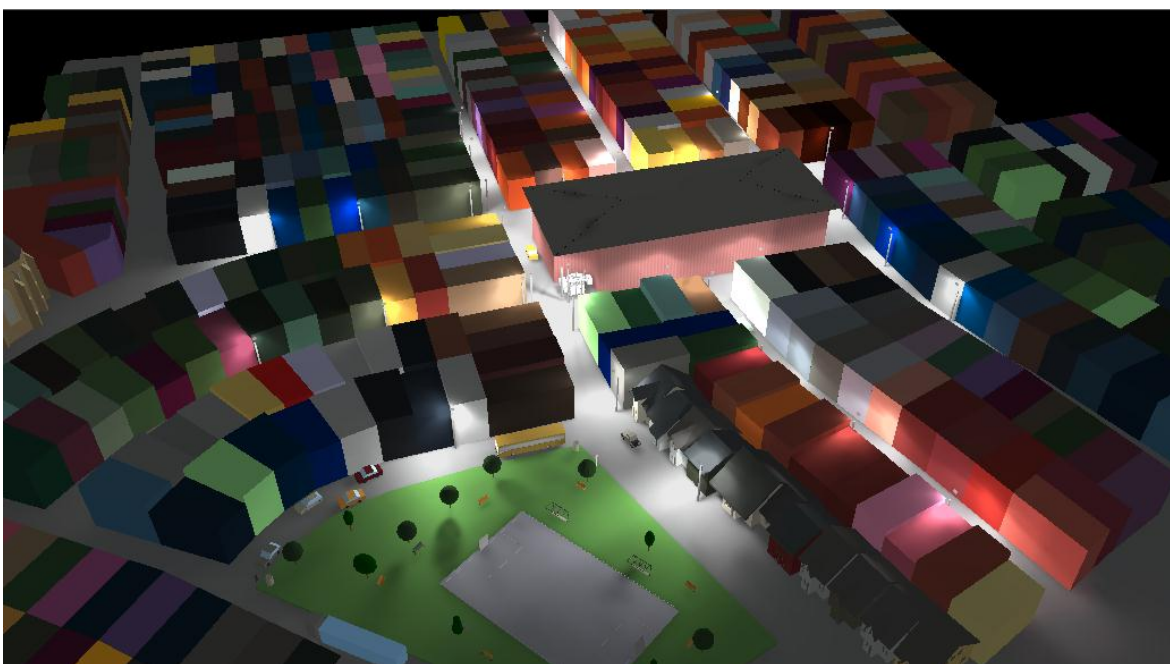
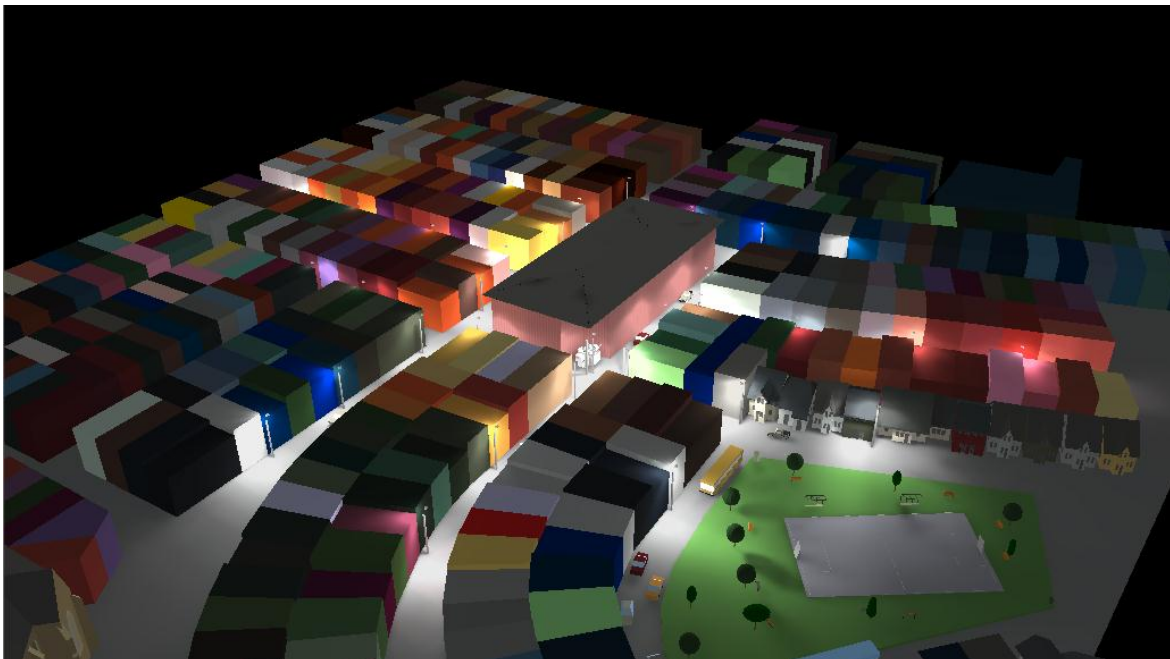




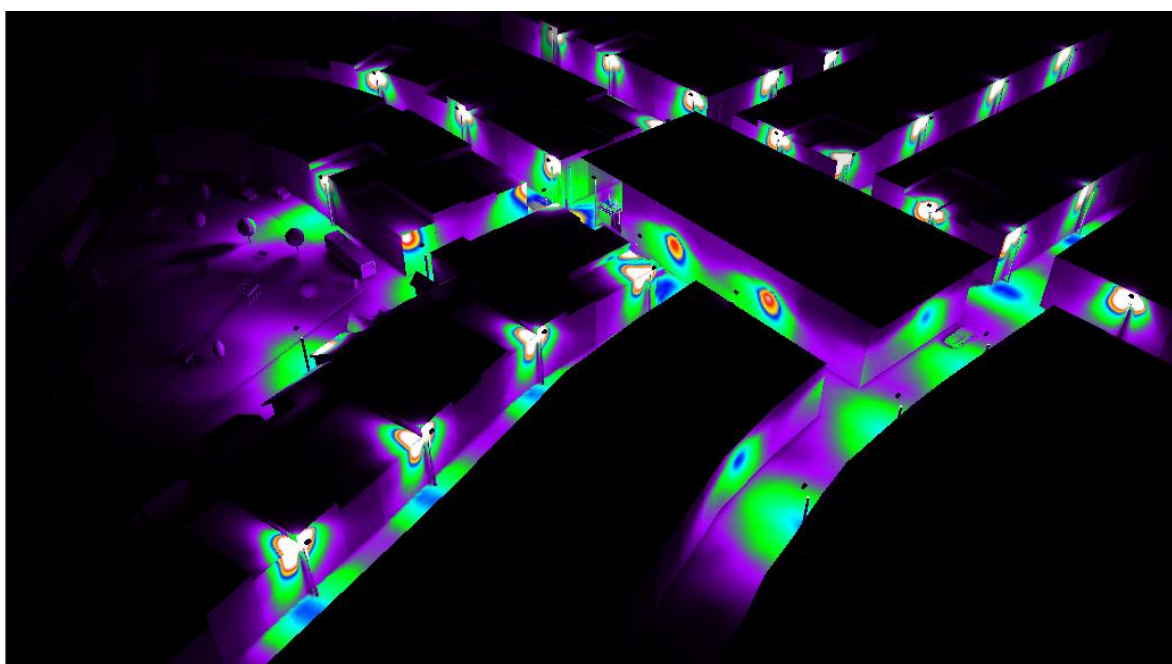
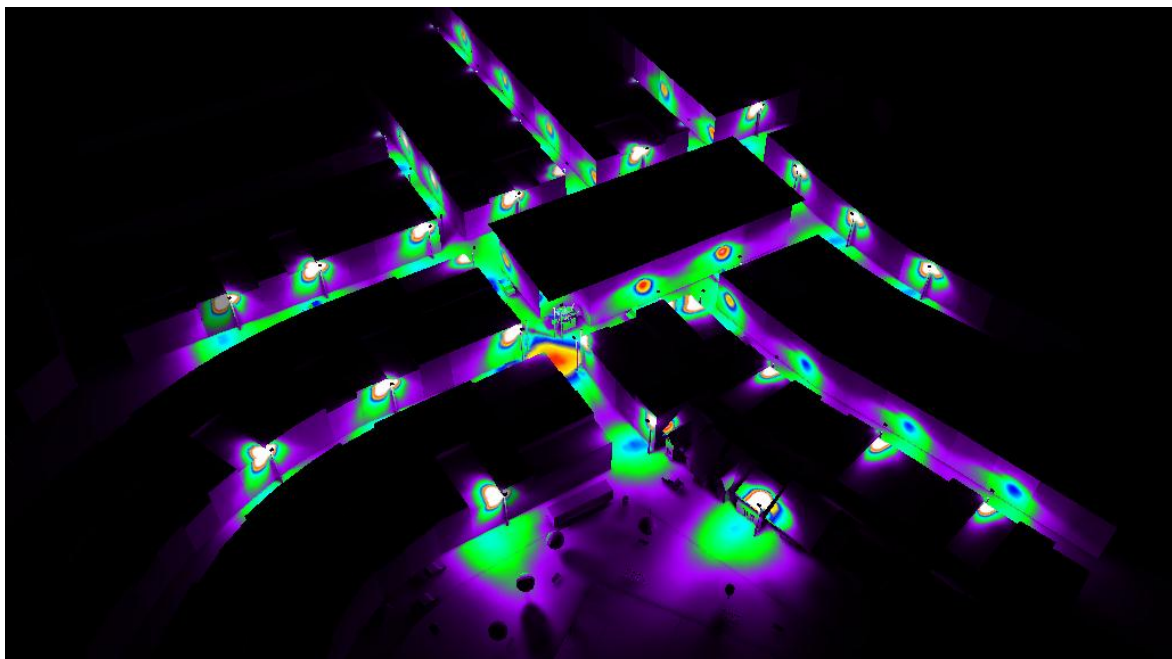


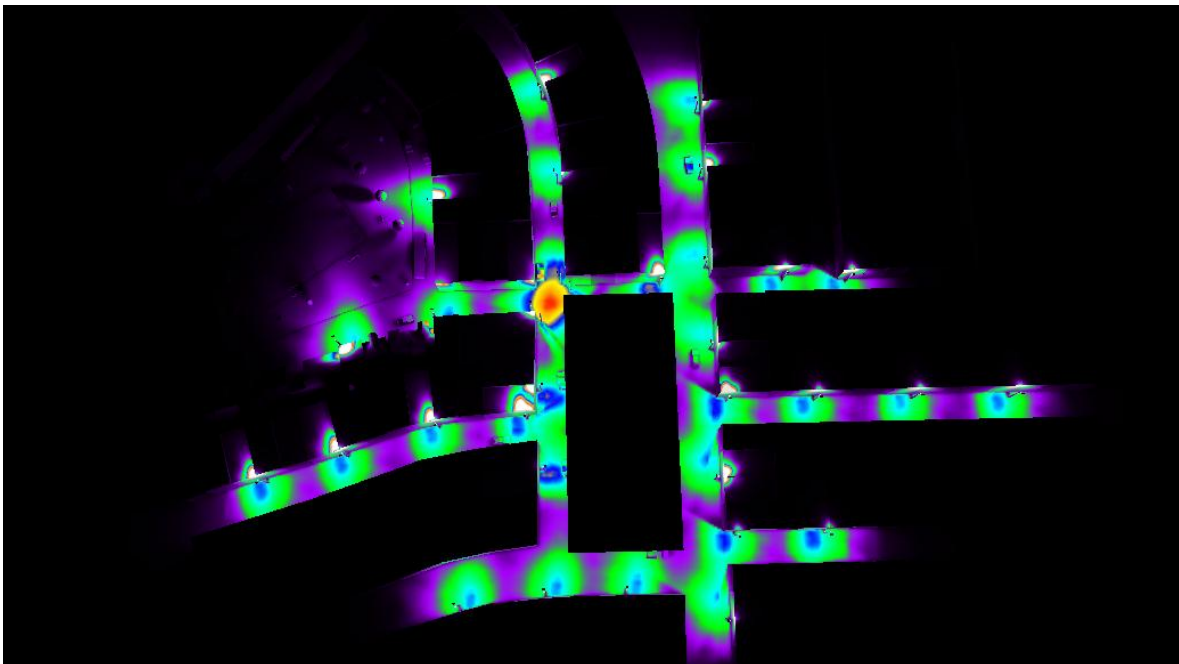
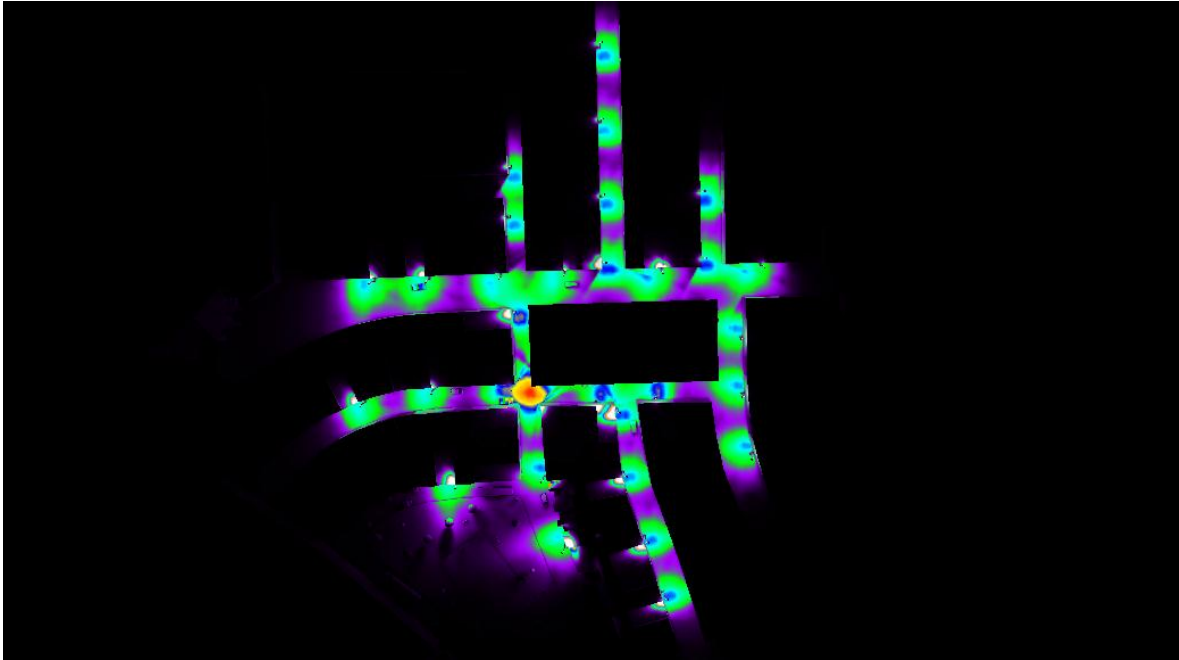
## Alumbrado con el trafo de 250KVA











#### CONCLUSION:

El nivel de iluminación para el proyecto a ejecutarse ya sea en los tres casos para los diferentes trafo que alimentara a las cargas, cumple con los requerimientos según el código nacional de electricidad, según las tablas que muestra el nivel de iluminación mínimo requerido para alumbrado público, alumbrado de calles y aceras es de 5 lux, por lo tanto en dicho trabajo estamos cumpliendo.